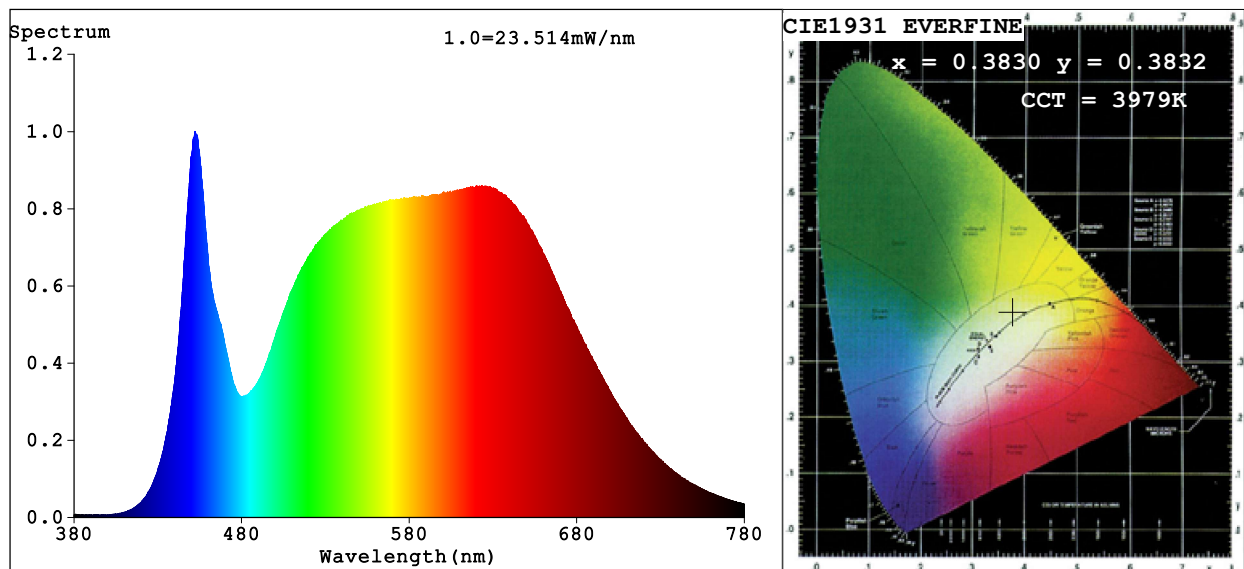


## Spectrum Test Report



### Color Parameters:

Chromaticity Coordinate:  $x=0.3830$   $y=0.3832$   $u'=0.2242$   $v'=0.5048$   
CCT=3979K (Duv=0.0022) Dominant WL:Ld =578.0nm Purity=29.9%  
Ratio:R=19.3% G=76.9% B=3.7%; Peak WL:Lp=452.2nm FWHM=24.4nm  
Render Index:Ra=91.2 CRI=87.2 TM30:Rf=90 Rg=99  
R1 =91 R2 =93 R3 =93 R4 =91 R5 =90 R6 =89 R7 =96  
R8 =88 R9 =67 R10=82 R11=90 R12=66 R13=91 R14=95 R15=90

### Photo Parameters:

Flux = 1296 lm Eff. : 90.50 lm/W Fe = 4.465 W

### Electrical parameters:

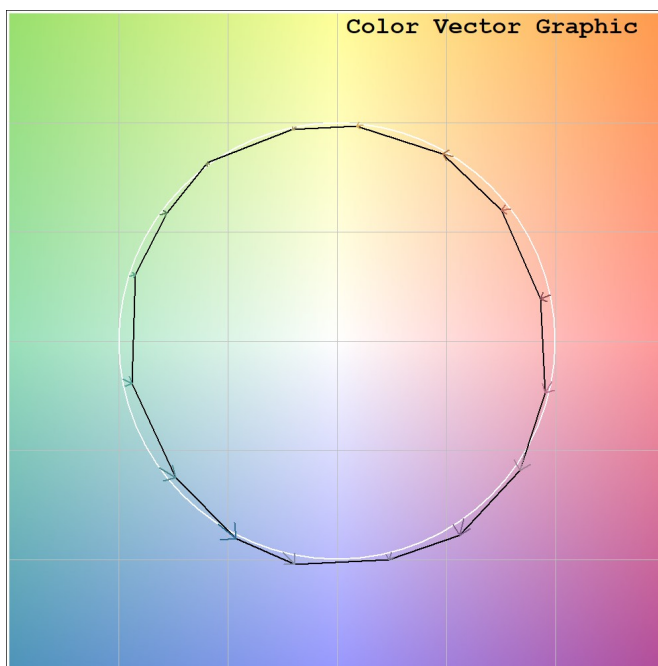
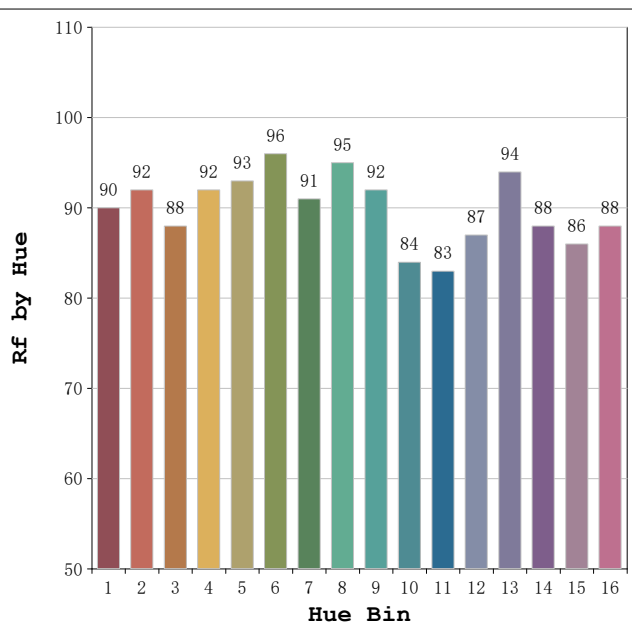
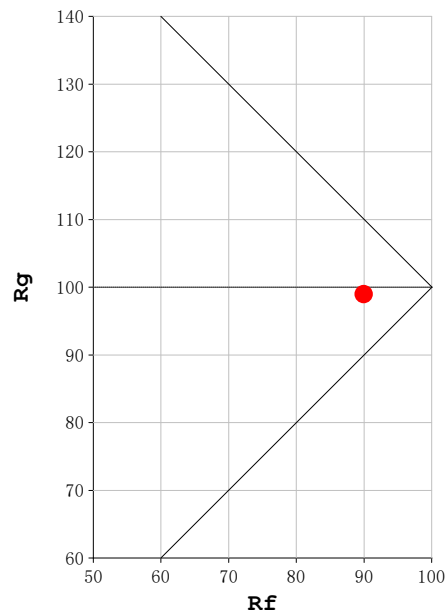
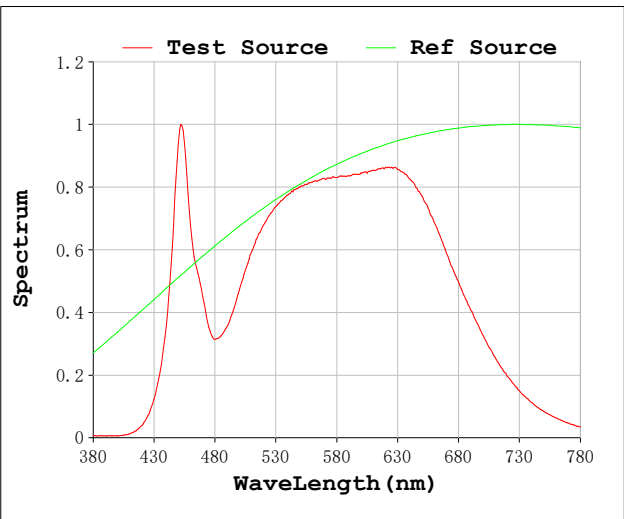
V = 23.998 V I = 0.5969 A P = 14.32 W PF = 1.000

Status: Integral T = 1000 ms Ip = 42446 (65%)

Model:Ecoled Zafiro 4000k  
Tester:Sergio Carneros  
Temperature:27Deg  
Manufacturer:Luz Negra S.L

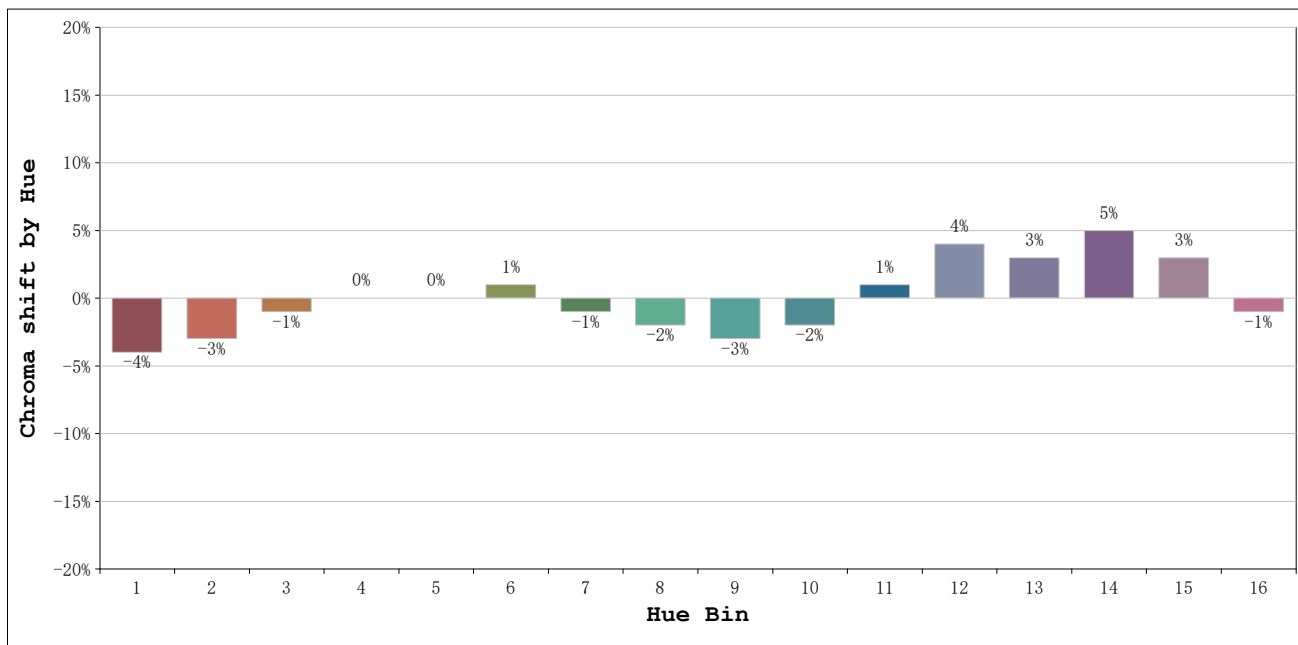
Number: 31.095  
Date:2025-11-17 08:06:56  
Humidity:40%  
Remarks:100cm de tira flexible

**Rf: 90**      **CCT: 3979 K**      **u': 0.2242**  
**Rg: 99**      **Duv: 0.0022**      **v': 0.5048**



Model:Ecoled Zafiro 4000k  
 Tester:Sergio Carneros  
 Temperature:27Deg  
 Manufacturer:Luz Negra S.L

Number: 31.095  
 Date:2025-11-17 08:06:56  
 Humidity:40%  
 Remarks:100cm de tira flexible



			Graphic shift(%)	
Hue Bin	Hue Angle	Rf	Chroma	Hue
1	0.0° - 22.5°	90	-4	0
2	22.5° - 45.0°	92	-3	2
3	45.0° - 67.5°	88	-1	5
4	67.5° - 90.0°	92	0	3
5	90.0° - 112.5°	93	0	2
6	112.5° - 135.0°	96	1	0
7	135.0° - 157.5°	91	-1	-2
8	157.5° - 180.0°	95	-2	-1
9	180.0° - 202.5°	92	-3	3
10	202.5° - 225.0°	84	-2	8
11	225.0° - 247.5°	83	1	11
12	247.5° - 270.0°	87	4	6
13	270.0° - 292.5°	94	3	-1
14	292.5° - 315.0°	88	5	-5
15	315.0° - 337.5°	86	3	-7
16	337.5° - 360.0°	88	-1	-5

Model:Ecoled Zafiro 4000k  
 Tester:Sergio Carneros  
 Temperature:27Deg  
 Manufacturer:Luz Negra S.L

Number: 31.095  
 Date:2025-11-17 08:06:56  
 Humidity:40%  
 Remarks:100cm de tira flexible